

Travel data
provided by
South East Coast Ambulance Service
NHS Foundation Trust



East Sussex Stroke Data

Methodology

- Cases with stroke on the SECAmb crew condition code in East Sussex between April and June 2012
- 300 calls reviewed in detail – represents 30% of potential strokes in this period
- 50.3% of patients were transported to the Conquest Hospital and 49.7% to the Eastbourne District General Hospital (EDGH)
- Reviewed all parts of the current pre hospital journey to Conquest and EDGH
- Modelled the change to the journey time (from address of incident to destination hospital) if stroke services were on one site only

Current Results

- Average Response Time - 00:07 minutes
- Average on scene time - 00:34 minutes
- Average Journey Time- 00:14 minutes
- *Average current total Pre Hospital Time- 56.14 minutes*

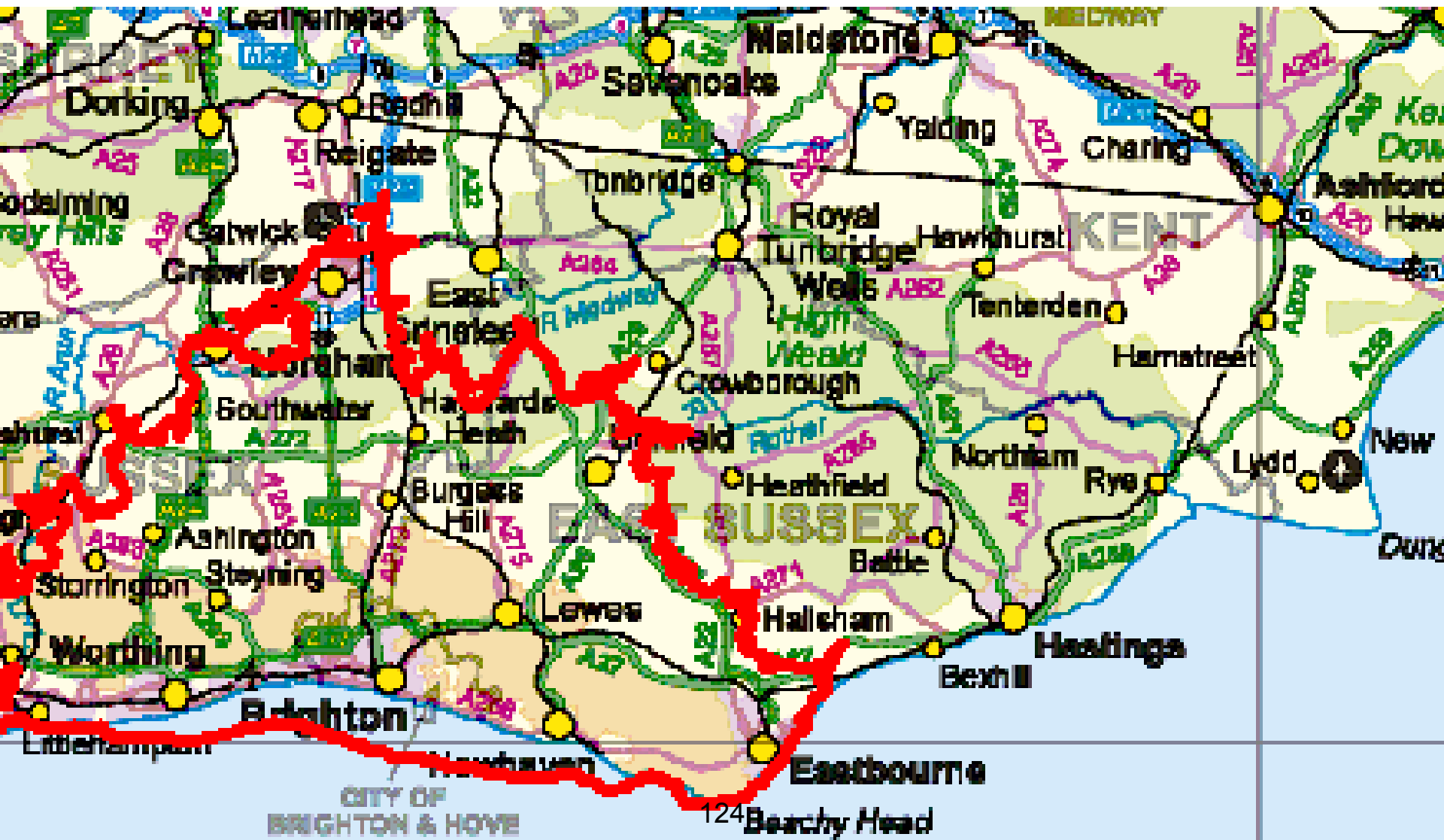
Modelling Results

- Average journey time if Conquest is the destination - 00:24 minutes - 10 minute increase (**this equates to an 18% increase in the total pre-hospital time**)
- Average journey time if EDGH is the destination - 00:27 minutes – 13 minute increase (**this equates to a 23% increase in the total pre-hospital time**)

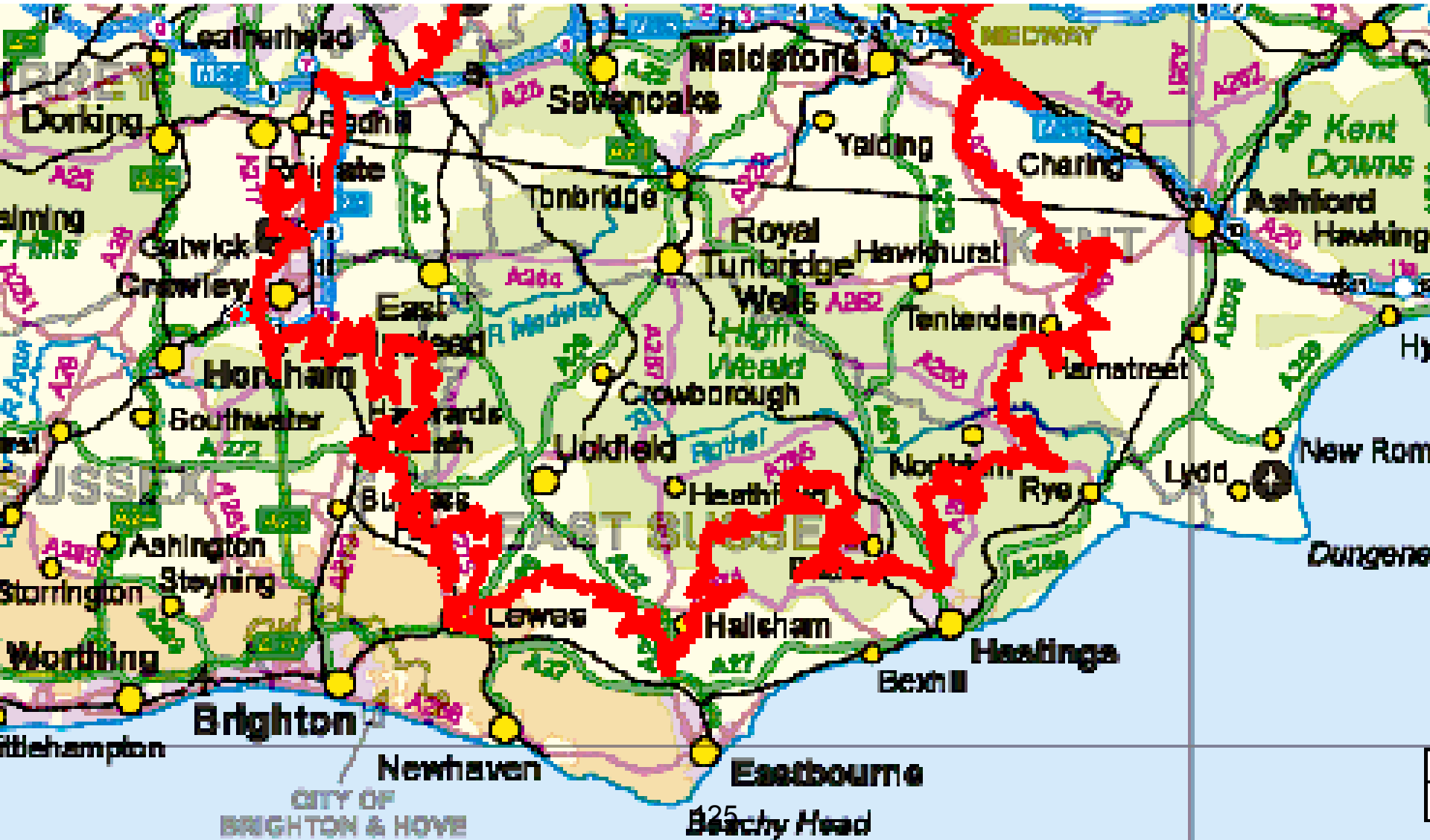
45 minute isochrone maps

i.e. shaded areas are within 45
minutes travel time of the named
hospital

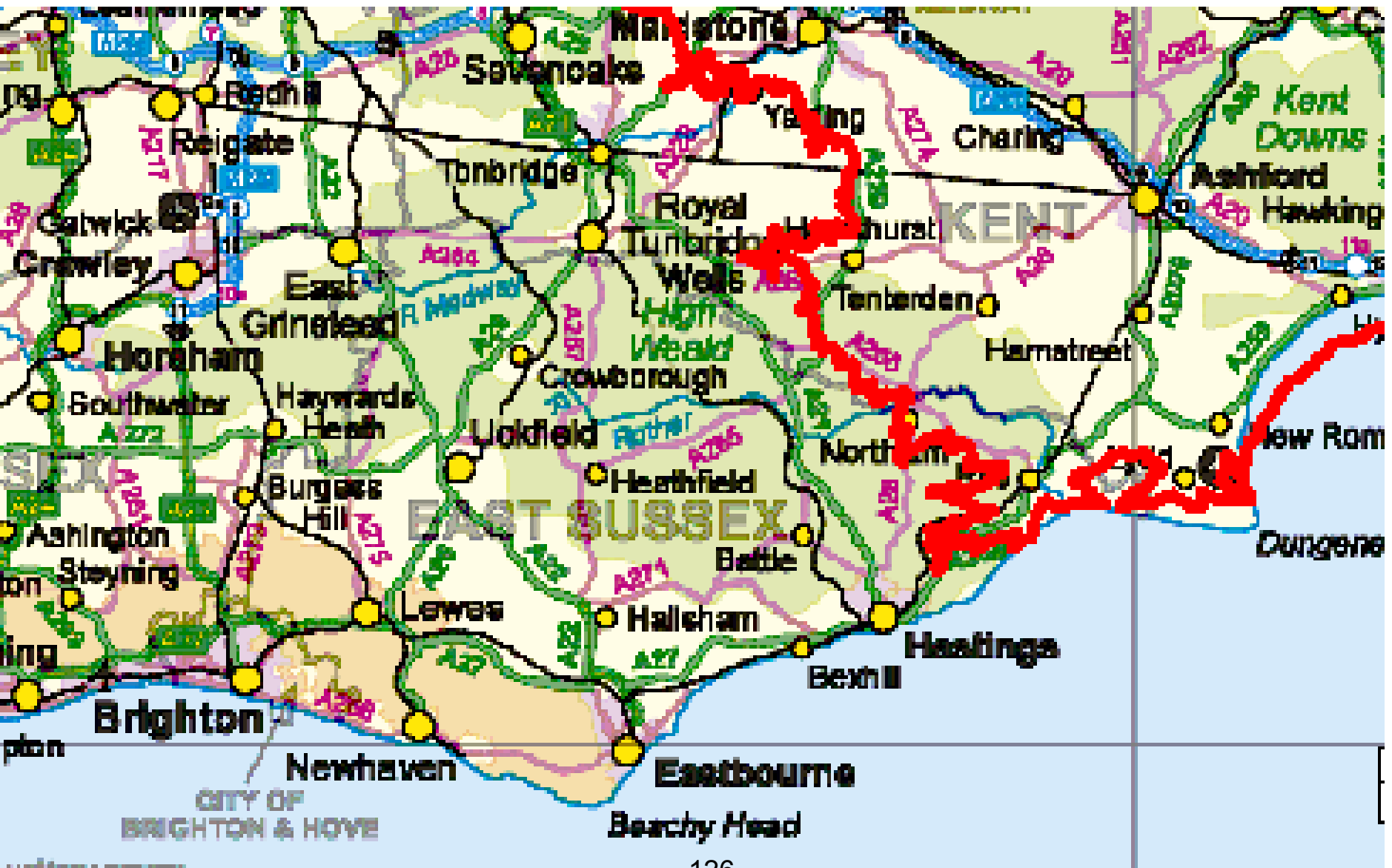
Royal Sussex County Hospital, Brighton



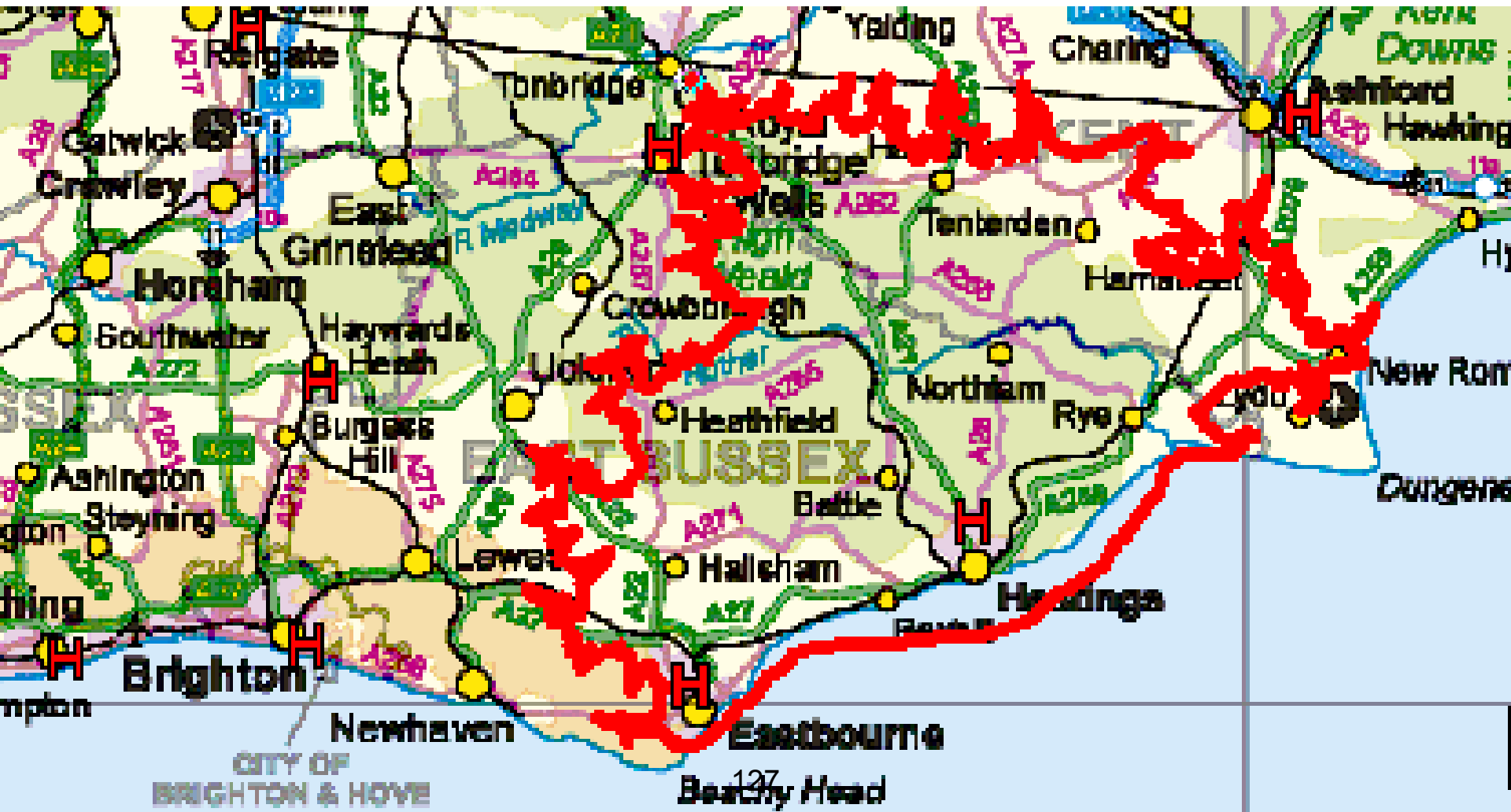
Kent & Sussex Hospital, Pembury



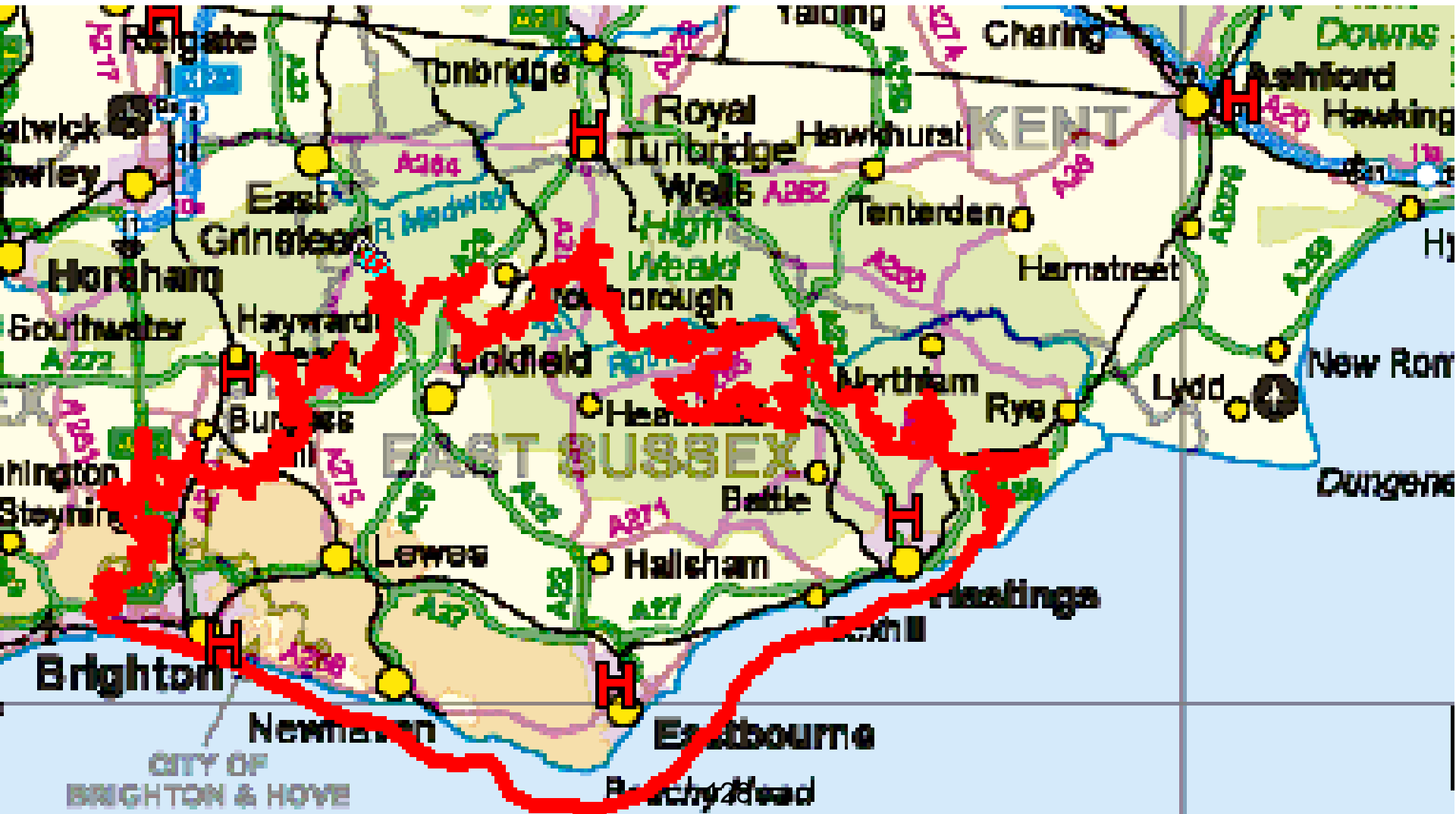
William Harvey Hospital, Ashford



Conquest Hospital, Hastings



Eastbourne District General Hospital



Transfer times between Eastbourne DGH and the Conquest Hospital

- Sample data is insufficient calculation of Ave Travel Times between Conquest and EDGH
- Travel Times will vary by day of week and hour of day
- Blue light travel times is usually to scene of incident, not transport to hosp, when crew is providing care to patient in back of ambulance.
- Better travel time for comparison of options is a web based mapping such as Google.

Travel time Conquest to EDGH

